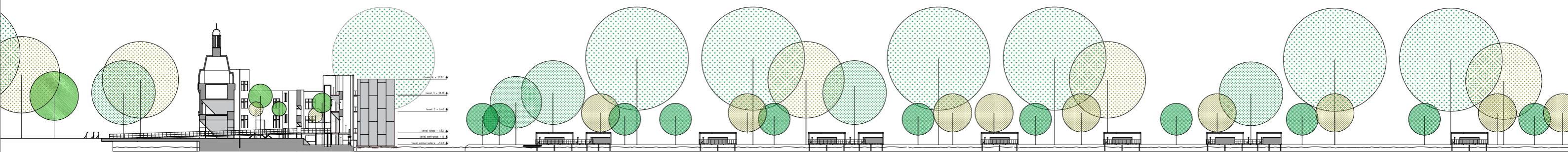
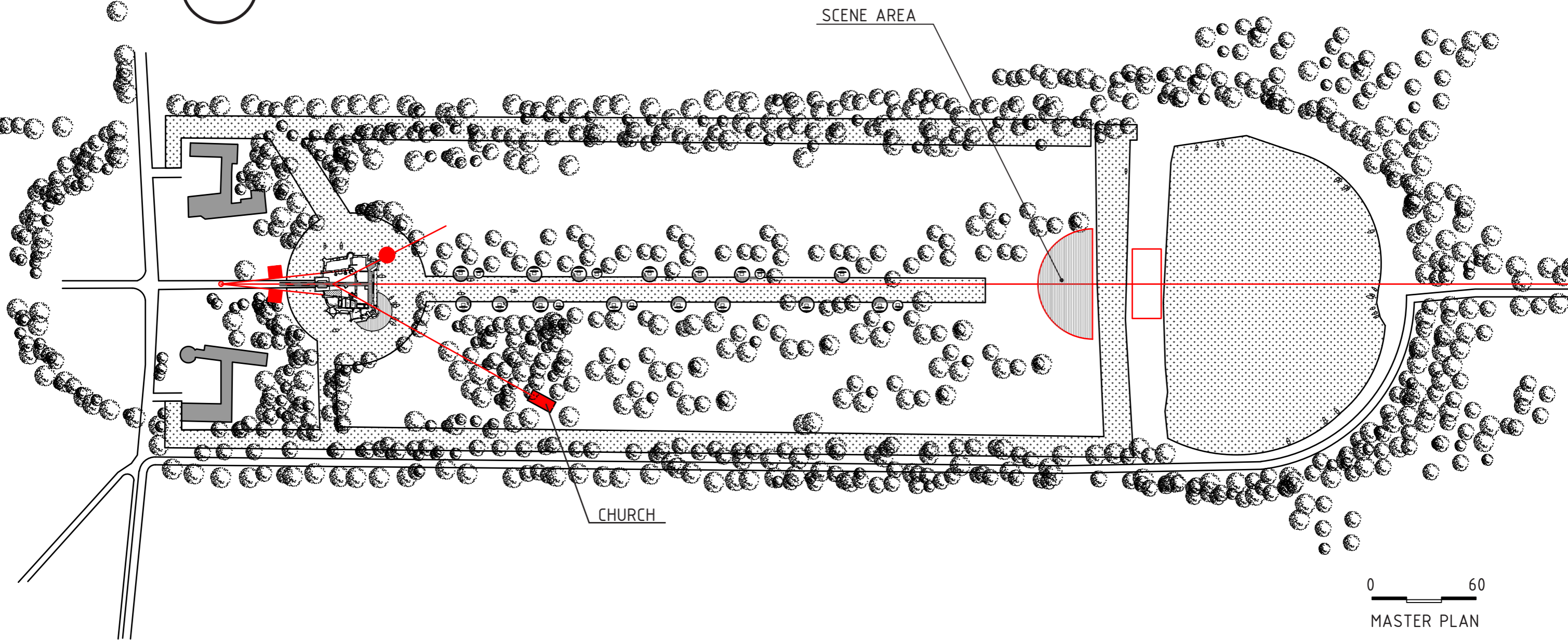


"MISE EN ABÎME"

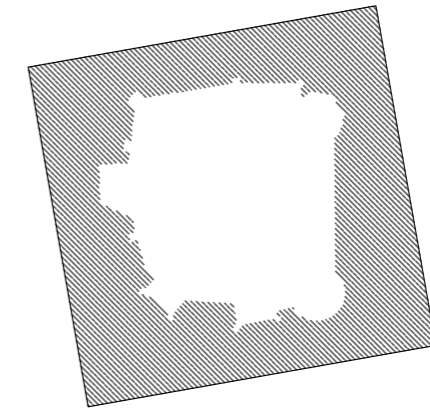




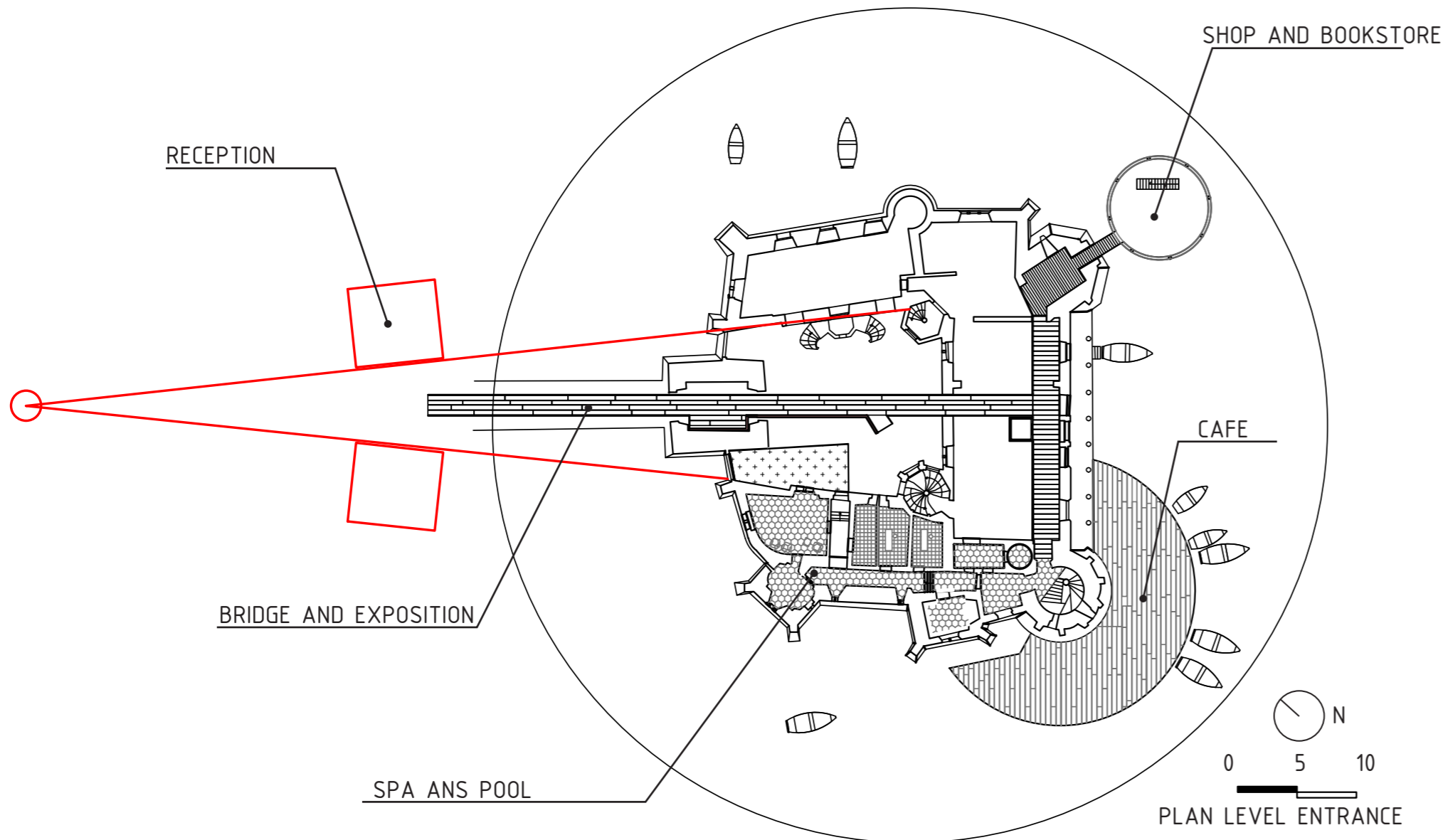
MASTER SECTION



MASTER PLAN



CONCEPT : BUILT OUT OF THE PRECIOUS HEART

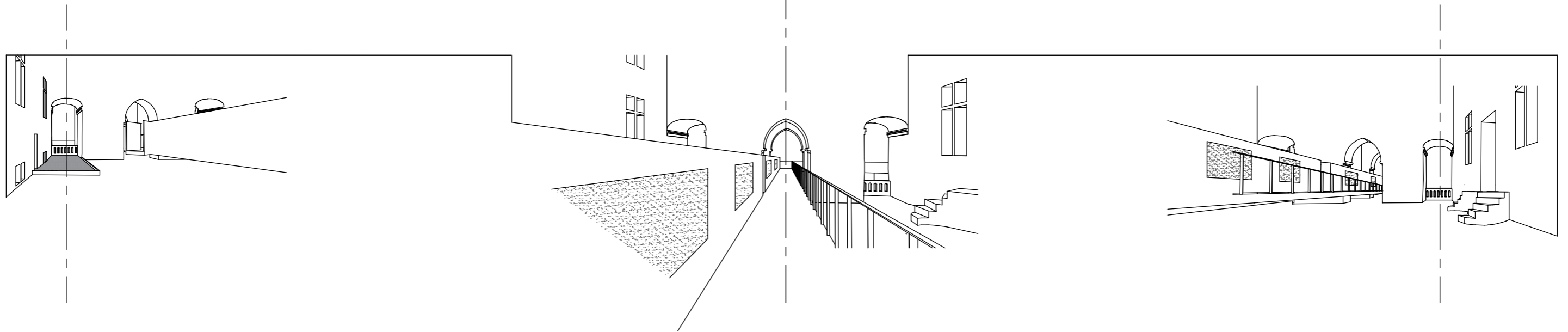
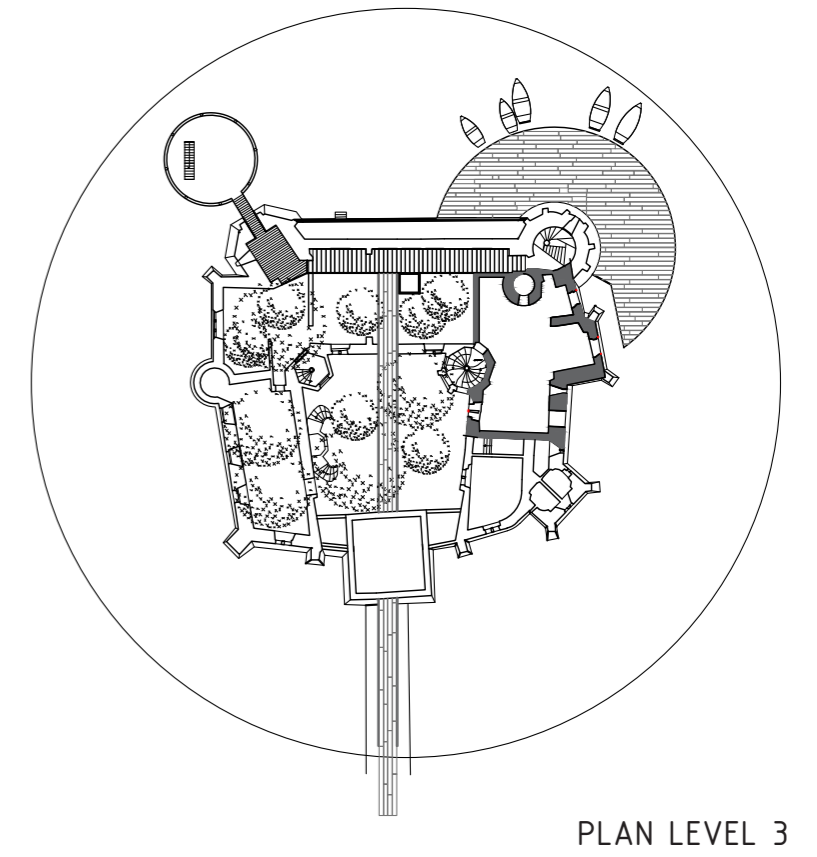
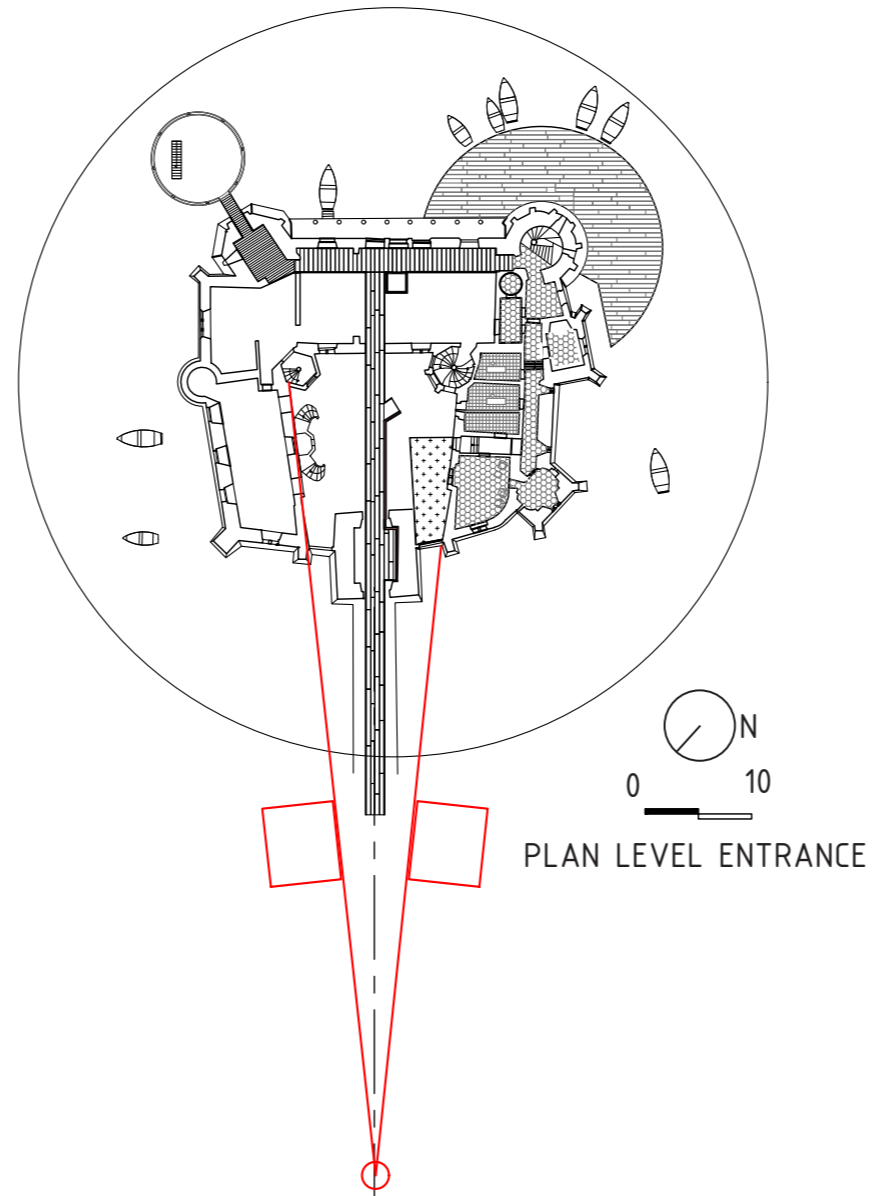


The concept for our project involves projecting the structure into a *mise en abîme* where the ruins themselves are the theme. The *mise en abîme* approach makes use of natural or added materials that mirror one another. Water, reflections, plants, introduced elements with mirrored surfaces, ruins with restored windows and doorways, suspended passages as fords – all these play into a sense of duplication, where clusters blur together like fragments of shapes reflecting one another in an infinite loop.

For the vegetation originally confined within French gardens, speaking to the notions of the infinite and cosmogony, the outlines are still bounded. But within the structure, intentionality gives way to the overwhelming power of nature, imbuing the whole with a dreamlike quality that we have chosen to accentuate, as if to yield the space to the ghosts that inhabit this enchanted location.

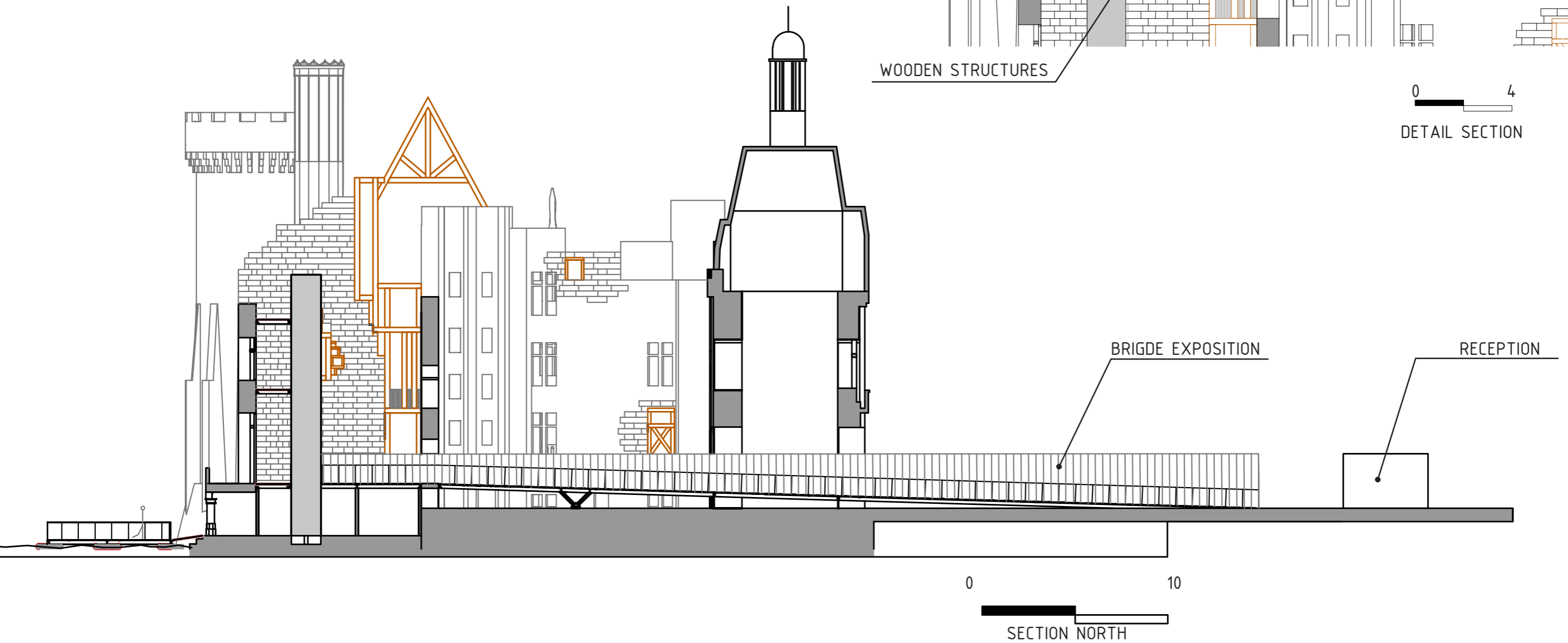
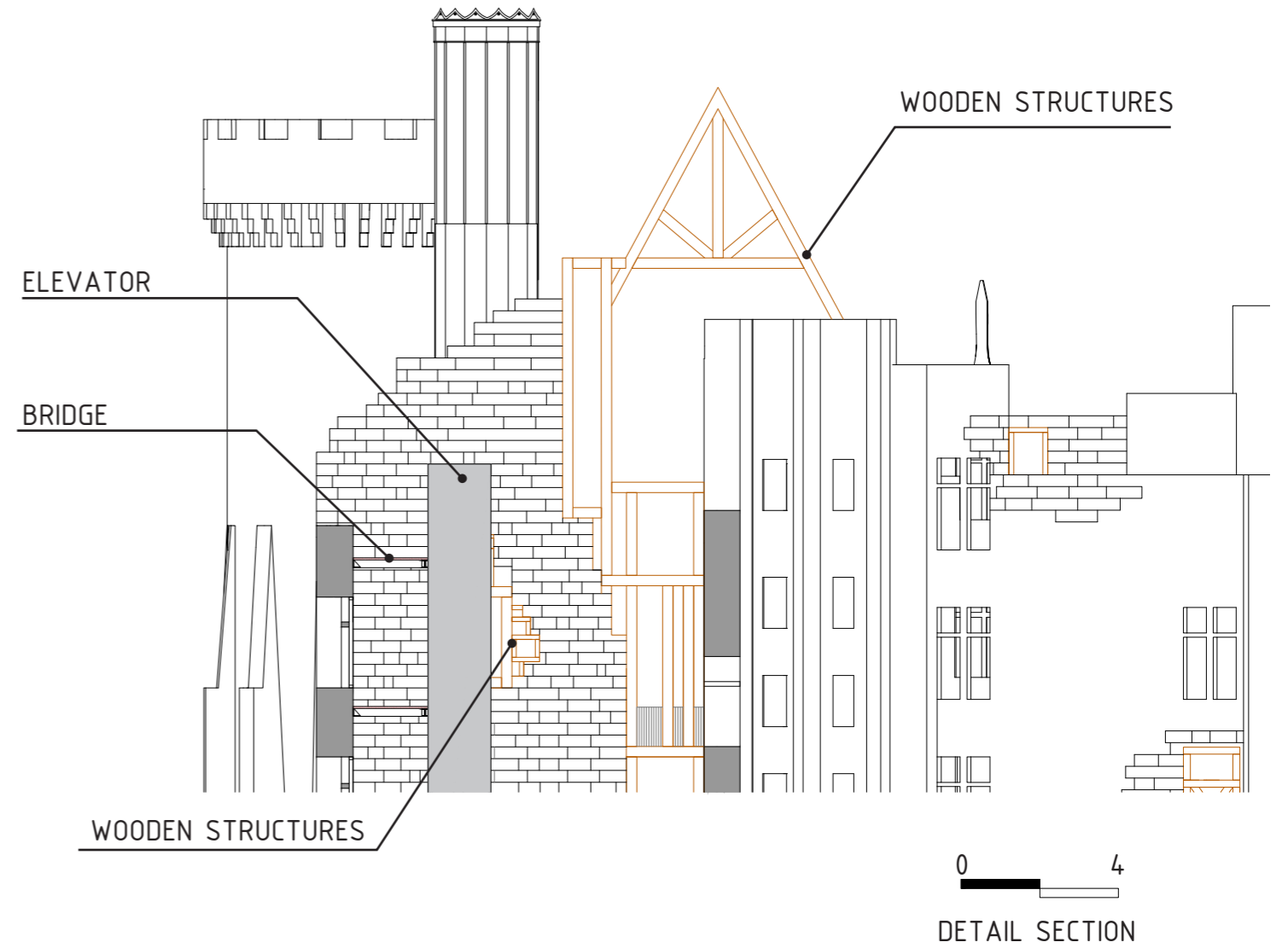
Our base unit is the circle that surrounds the building, serving as a point of reference throughout the project; this can be found in the structure of the decentred tower over the water, the pontoon that will border the part of the château being converted into a spa, and those that will be built along the canal in front of the small dwellings used a few nights at a time like the old hunting lodges. A fragmented hotel built of wood and mirrored surfaces to showcase the reflections of the surrounding vegetation, infinitely multiplying the elements in harmony with the spirit of the initial composition.

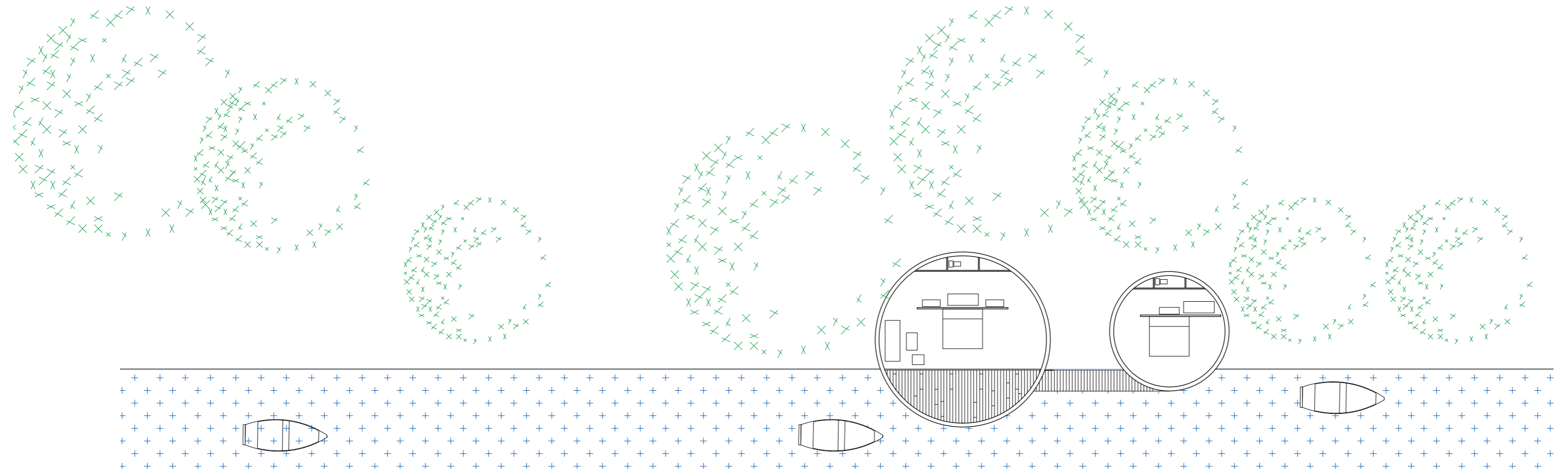
The exterior develops its own raison d'être in reversing the course of history, allowing the interior to make space for vegetation. One part of the project will be developed within the confines of the building, however – the wellness centre terminating in a pool that extends to a railing looking out over the natural setting. On the upper levels, this addition will be used as an event space/performance venue, making the site much more than a reflection of the past. It will reflect the outside world, however, as this section, like the decentred tower, will be covered in a mirrored surface.



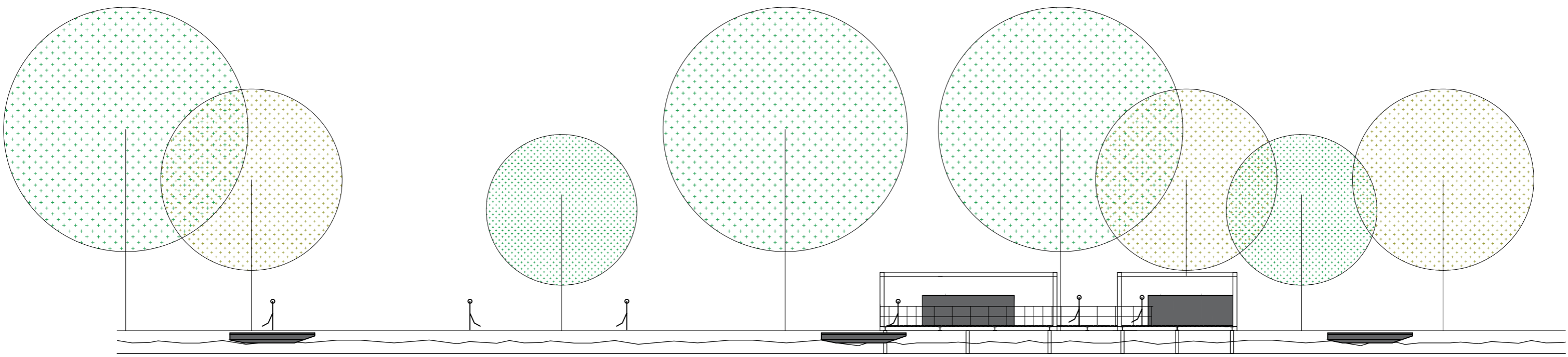


For the structure, we aim to reinforce the walls and openings with wooden structures that will introduce a new composition. The eroded parts of the walls and façades will be covered with an anthracite coating, thereby incorporating the drama of the fire into the surface treatments.





N
PLAN HOTEL ROOM



0 10
SECTION HOTEL ROOM